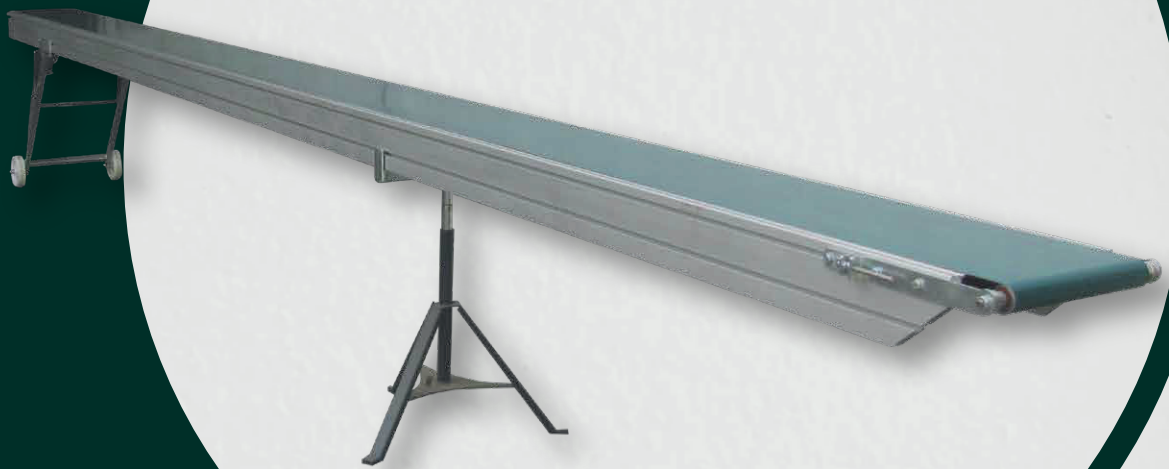


6 METER CONVEYOR BELT



TECHNICAL DETAILS



Speed
13 meter/min



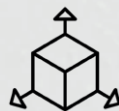
Voltage
380 V



Frequency
50 Hz



Power
0,25 kW



Dimensions
Width: 50 cm
Length: 610 cm
Height: 80 cm



Weight
70 kg

TECHNICAL SPECIFICATIONS

- The body is light alloy aluminum.
- Band is imported. It is affixed suitable for double-sided operation.
- Band width is 30 cm.
- It can be operated at the desired speed with the inverter. (optional)
- It can be operated forward and backward.
- In systems with shafts, 5-6 bands are disabled when the base band fails. In this system, only the faulty one is disabled.
- It is light. 2 people can carry it easily.
- Optionally, a parabolic foot or a fixed foot with height-adjustable wheels can be attached.

